

1. HOW DOES THIS SCREEN WORK?

The solar cell collects sunlight and converts it into energy to charge the battery. So, you can still use the screen on days that are not as sunny thanks to the energy stored in the battery. Naturally, the solar cell must always be in a place where it can get enough sunlight. The Fixscreen 100 Solar's scope of application, therefore, is also geographically defined based on this and on the prevailing weather conditions.

2. CAN THE FIXSCREEN 100 SOLAR BE USED IN ANY COUNTRY?

The Fixscreen 100 Solar is available worldwide, for countries between 52° Northern- and Southernlatitude (between 52° N and 52° S). This scope of application is taken from the Somfy instructions. The Fixscreen 100 Solar may not be used in the 'not possible' zones because the battery cannot withstand cold temperatures below -20°C, whereby the operation also cannot be guaranteed.

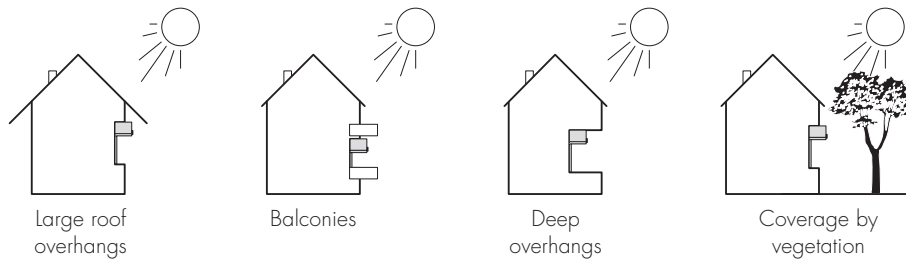
Any use outside of the scope of application as defined by Renson is not in conformity. Because of this and a disregard for the instructions in the manual, any liability and warranty on Renson's behalf become null and void and the proper operation of your Fixscreen 100 Solar cannot be guaranteed.



3. ARE THERE POINTS FOR ATTENTION CONCERNING INSTALLATION?

Never install the solar panel behind a window or in the shade. The light-sensitive cells must always be accessible by sunlight, so never put anything in front of them. Make sure that the solar panel remains free of snow and that the light-sensitive cells are not blocked by plant growth, overhanging elements, etc.

In below mentioned circumstances Renson recommends not to use the Fixscreen 100 Solar. Possibly the individual solar panel can be used. A cable length of 3 or 5 m is possible to order.



NOT SURE WHETHER TO GO FOR SOLAR-POWERED RENSON[®] EXTERNAL SUN PROTECTION SCREENS?



The Somfy Solar app enables you to see which Solar solutions might be suitable, in advance and in a specific environment. The app is available for free in the App Store and via Google Play.



4. AUTOMATION: WHICH CONTROLS CAN BE USED FOR THE FIXSCREEN 100 SOLAR?

The Fixscreen 100 Solar works with a standard RTS control:

- Remote controls, e.g. Situo RTS
- Wall-mounted remote controls, e.g. Smoove (origin) RTS
- Sensors, e.g. Eolis sensor RTS, Soliris Sensor RTS, Sunis Wirefree Sensor RTS
- App-controlled, e.g.: Connexoon RTS

5. WHAT IS THE AUTONOMY OF THE MOTOR?

I.e. how many days can the motor continue to operate without sunlight, or how many times can this be raised and lowered when the battery is full?

This depends on several peripheral factors, including the size of the screen, the temperature, orientation, the angle at which the sunlight hits the solar cell, etc.

Results R&D testing:

- Testing setup Fixscreen Solar with glass fibre fabric with following dimensions 4m W x 2,7m H with fully loaded battery and covered solar cell: With a full battery, the motor can execute 150 movements or 75 cycli.
- Testing setup Fixscreen Solar with glass fibre fabric with following dimensions 3 m W x 3,5m H with fully loaded battery and covered solar cell: With a full battery, the motor can execute 96 movements or 48 cycli.

6. HOW LONG WILL THE BATTERY LAST AS FROM THE INSTALLATION?

The battery is fully charged when manufacturing each order and a sticker with the charge date is affixed to the battery. The battery is depleted by 30% after 6 months.

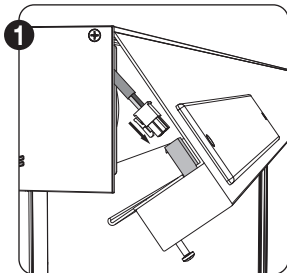
7. WHAT IS THE ADAPTER FOR THE OXIMO BATTERY AND HOW DOES IT WORK?

This is the battery's charger. Can be ordered via E-reps when configuring the screen (G6026311 - Somfy Oximo Wirefree adapter).

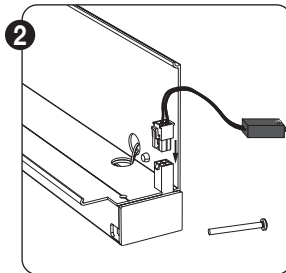
The battery can be charged in the manner shown below. Therefore, the installer only has to remove the front cover and attach the adapter's connector to the connector in the front cover.

This means that the battery does not have to be removed from the rectangular profile.

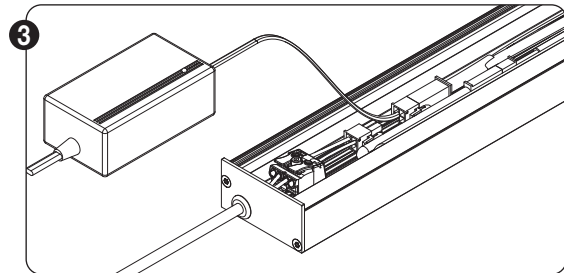
The adapter cable is 2.7 m long.



1 Demount the cover plate from the box, by unscrewing 2 screws, on both ends of the box. Detach the connector from the motor cable.



2 Connect the connector in the front cover to the battery adapter and fully charge it until the green light is on.



3 In case of individual solar panel, the battery is integrated in the box of the solar panel. The box can be opened by unscrewing the 2 screws on both ends of the box. Connect the connector with the adapter and fully charge it, until the green light is on.

When the screen is delivered, the battery will be fully loaded. If the screen is installed shortly after delivery, the battery doesn't need to be loaded again by means of the adapter.

8. CAN THE SOLAR CELL BE INSTALLED SEPARATELY FROM THE SCREEN?

Yes, when ordering, there is a possibility to choose a individual solar panel. The panel is connected to the box with a cable length standard 3 m (5 m surcharge). It is also necessary to choose the position of the cable throughput.

9. HOW DO YOU PROGRAM THE MOTOR?

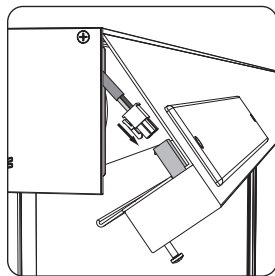
You program this motor in the same way you program a Somfy RTS motor.

10. HOW DO YOU REPLACE THE MOTOR?

You replace the motor in the same way that you replace it in our standard Fixscreen.

So, when opening the front cover, only the connector must be disconnected from the motor cable.

See the illustration below.



Demount the cover plate from the box, by unscrewing 2 screws, on both ends of the box.

Detach the connector from the motor cable.

Note: individual solar panel

Open the box with fabric tube and motor by unscrewing 2 screw on the bottom of the box.

Cut the cable that is attached to the individual solar panel. Remove the motor.

Important: the cable that connects the individual solar panel with the box should always be reachable.

If the cable is integrated in facade in plaster, it is needed to integrate the cable into a cable tray.

11. IS THERE A SEPARATE TRAINING AVAILABLE FOR THE FIXSCREEN 100 SOLAR?

The Fixscreen 100 Solar training is integrated into the general Fixscreen training.

12. WHICH TYPE OF MOTOR IS USED FOR THE FIXSCREEN 100 SOLAR?

The Fixscreen 100 Solar is equipped with a radio-controlled Somfy RTS motor: Sunea 40 DC RTS.

Power supply	12 V DC (min 11,5 V, max 14 V)
Radio frequency	433,42 MHz
Index protection rating	IP 44
Operating temperature	-10°C / +40°C and exceptionally -20°C / +60°C
Maximum number of connected RTS control points	12
Maximum number of connected sensors	3
Electrical insulation	Class III

13. THE MOTOR DOES NOT RESPOND AND APPEARS TO BE DEFECTIVE

As this motor is powered by a battery, the frequency of the signal detection for this motor was halved. The motor scans for signals every 2 seconds. Therefore, it is possible that the screen will not respond immediately when you want to operate it. You simply need to hold down the control for a longer time to make the screen work.