

392

Linear bar grille

LINEAR BAR
GRILLE

ALUMINIUM



MATERIAL

- Made from aluminium sections: AlMgSi 0.5 [according to EN 12020-2]
- Finishing: anodized in satin colour [20 micron] or powder-coated in any RAL or Syntha Pulvin colour [40 micron]

Remark: Grille not to be walked on.

DIMENSIONS

- Bar spacing: 10 mm
- Grille section: 16 x 3 mm
- 392/2:
 - Length linear bar grille: min. 130 mm - max. 3500 mm [from 1600 mm multiple grille elements]
 - Width linear bar grille: min. 55 mm - max. 311 mm
- 392/3:
 - Length linear bar grille without frame: min. 120 mm - max. 1600 mm
 - Width linear bar grille without frame: min. 45 mm - max. 300 mm
- Minimum dimensions: 100 x 60 mm
- Effective opening = length and width - 50 mm
- Deflection: 15°
- Bars arranged lengthwise

FIXING

- No fasteners

OPTIONS

- Linear bar grille with flangless 'L' frame

TYPICAL APPLICATIONS

- Radiator frame

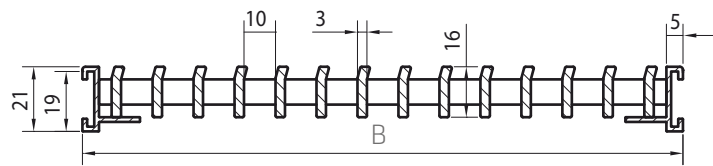
TECHNICAL SPECIFICATIONS

All properties are valid for the standard version of the Louvre, unless otherwise stated.

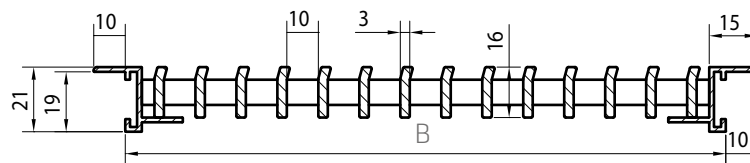
Airflow		[EN 13030]
K-factor [entry]		5.71
K-factor [discharge]		5.71
C _e coefficient		0.419
C _d coefficient		0.419
Technical data		
Visual free area		76%
Physical free area		76%

TECHNICAL DRAWINGS

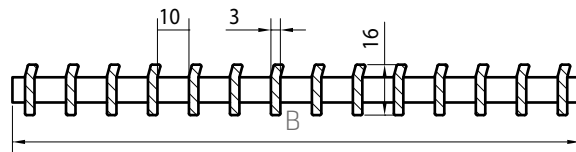
Cross-sections



Option: Linear bar grille without flanged "Z" frame



392/2: Linear bar grille with flanged "Z" frame



392/3: Frameless linear bar grille